

Two ways to be Unique

MyLab™Twice



Premium Performance and Point-of-care Ultrasound

Efficient Hospital Organization

In today's hospital organization, Efficiency and Productivity are of paramount importance. The ever expanding and changing of clinical needs requires medical equipment to deliver high performance, ease of use and, today more than ever, innovative solutions.

The unique "Twice Ultrasound Vision" represents a "paradigm shift" in the hospital organization, combining top performance and exclusive solutions able to change the daily clinical outcome.

Easy and Fast Diagnosis

Ultrasound Imaging is increasingly requested by several departments, providing better and safer diagnostic services.

In all of these activities, in particular the ones belonging to Critical Care units and the Emergency department, the ability to provide fast, accurate diagnosis makes the difference in supporting clinicians with difficult decisions.

The unique "Twice Ultrasound Vision" is based on this concept: the outstanding result is Premium Performance and Point-of-care Ultrasound.

Integrated Patient Management

The continuously growing level of healthcare technology today ensures high levels of diagnostic capability in all departments.

The integration of all clinical information is the challenge that will surely provide an improved workflow based on prevention and early treatment for better care.

The unique "Twice Ultrasound Vision" perfectly fits this approach, allowing physicians to seamlessly integrate results from point-of care exam with imaging from standard workflow.







Ergonomics and Comfort in daily practice



Touch Screen

The large and high-quality touch screen is well positioned near the most important working area of the control panel. The touch-screen allows all mode-dependent parameters to be clearly visualized and modified in one simple touch.

Simplicity

The ambitious target to make a premium performance ultrasound system with an intuitive interface has now been reached. From first sight the visual impact of the MyLab Twice is as simple as never before seen for such a level of ultrasound scanner. The most important controls are ergonomically located to make all operations both easy and fast.

Opti-Light

Optimal lighting has always been a crucial factor for ultrasound imaging. The latest

Technology of wide LCD 19" monitor allows images to be clearly visualized in any situation.

In addition, MyLab Twice introduces a further and unique feature: Opti-Light, the possibility to control the lighting room level directly from the touch screen. Once again, one step ahead in users' comfort and patient care.

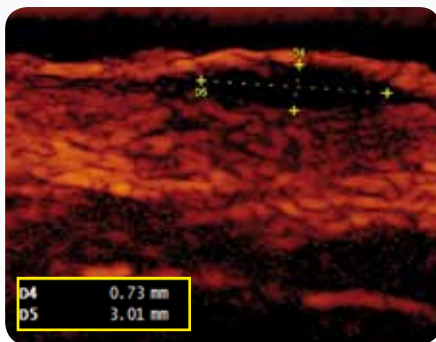
Dimensions

High performance does not always mean big dimensions. In the MyLab Twice project a particular effort has been addressed to reduce dimensions as much as possible, delivering a compact and agile system, easily moved and adaptable to any kind of environment, including the most critical ones, such as interventional and the operating room. The height-adjustable and rotating keyboard, as well as the multiplane-articulated monitor arm, make the optimal position always possible, and all from just one touch.

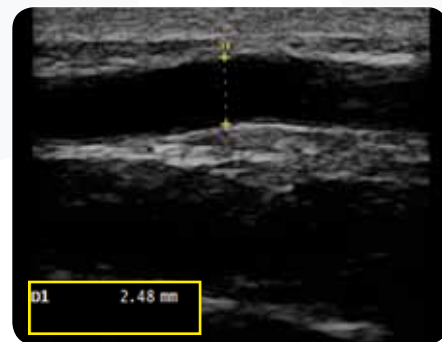
iQ Probes

Design and ergonomics are two important requirements in the development of the new family of transducers. iQ Probes set the new standard, not only for the outstanding performance in terms of image quality but also for the ergonomic design and light weight, which reduce the operator's strain while scanning.

Exclusive solutions to meet any clinical needs



Very small superficial lesion



> 22MHz Linear Probe

Esaote continues to lead the development of high frequency probes delivering unmatched performance in superficial investigations. Following the successful introduction of the 18MHz linear probe, the new 22 MHz linear probe once again represents the benchmark in this field. Once again innovative, once again unique.

> Arm-Held Wearable Ultrasound

MyLabSat represents the most innovative concept of point-of-care ultrasound: the Arm-held wearable ultrasound. As an extension to the user's arm, MyLabSat offers a comfortable and stable setting, able to face any working environment, even the most critical ones. Wear it and scan wherever imaging is needed.

> Advanced Remote Controls

With particular focus on clinical activities, Esaote introduces a further innovation: Programmable controls on the probe and on the MyLab Sat integrated handle allows the operator to conveniently freeze, save, print, etc... without having to move the hand from the scanning position. Once again the easiest and fastest way to work.





MyLab™Sat

MyLab Sat point-of-care ultrasound moves imaging to wherever it is needed, for faster diagnosis and improved patient care.

MyLab Sat design is based on the “ARM-HELD” concept which delivers a brand new generation of ultrasound systems that is with the device held on the user arm through an appropriated strap belt. In this condition, the screen

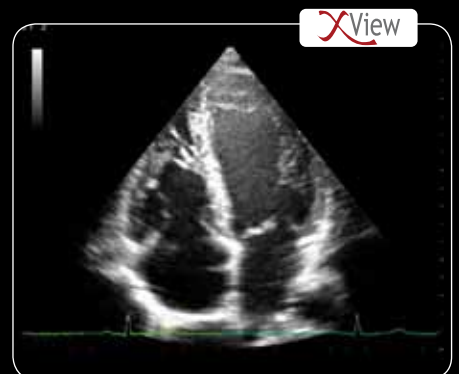
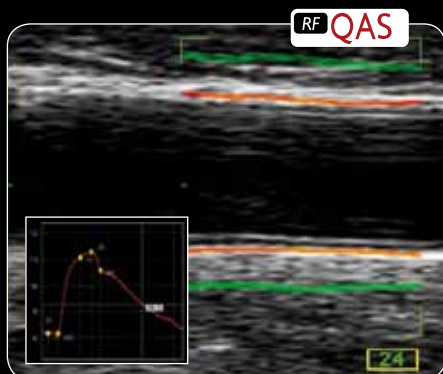
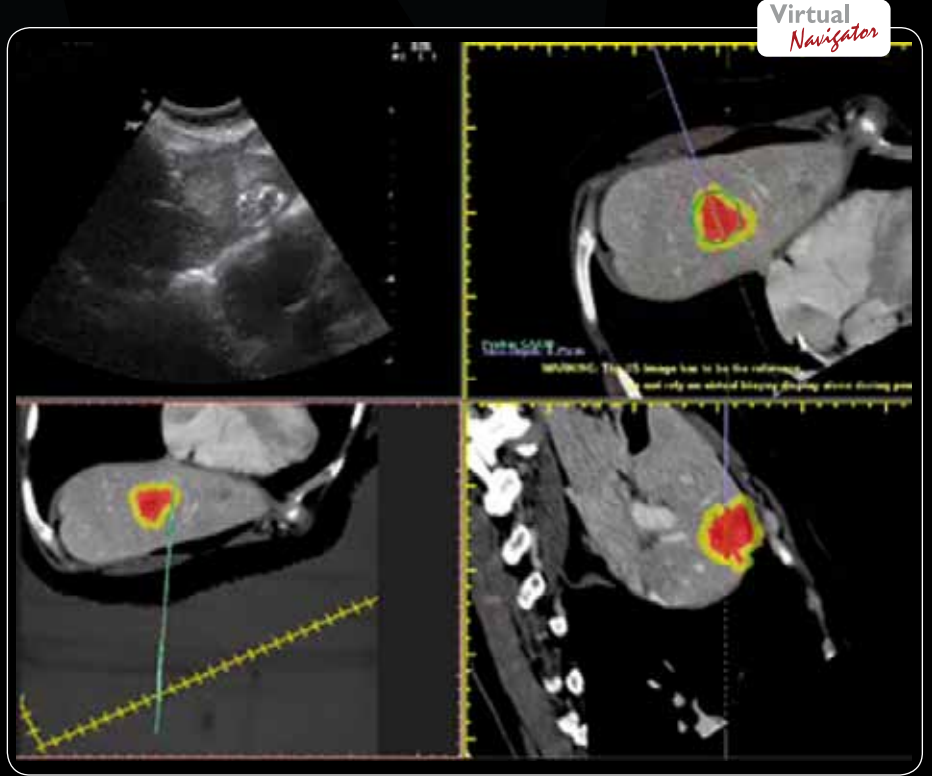
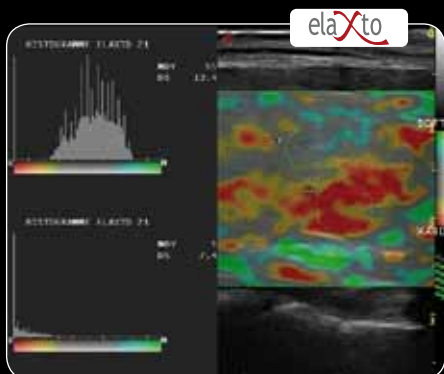
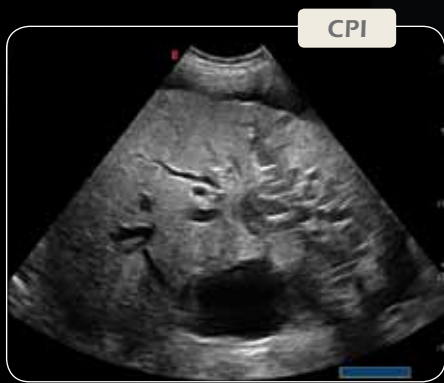
orientation moves automatically from landscape to portrait view. Simplified user interface and configurable keys on the probe and the handle make ultrasound scanning easier than ever.

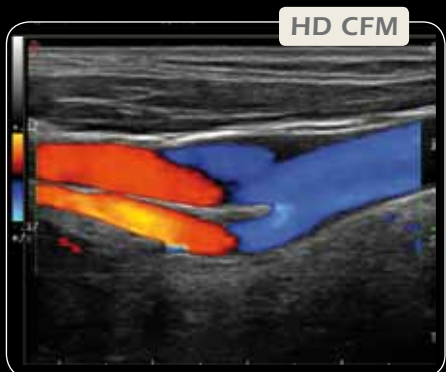
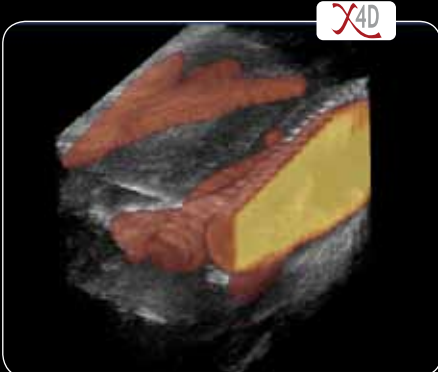
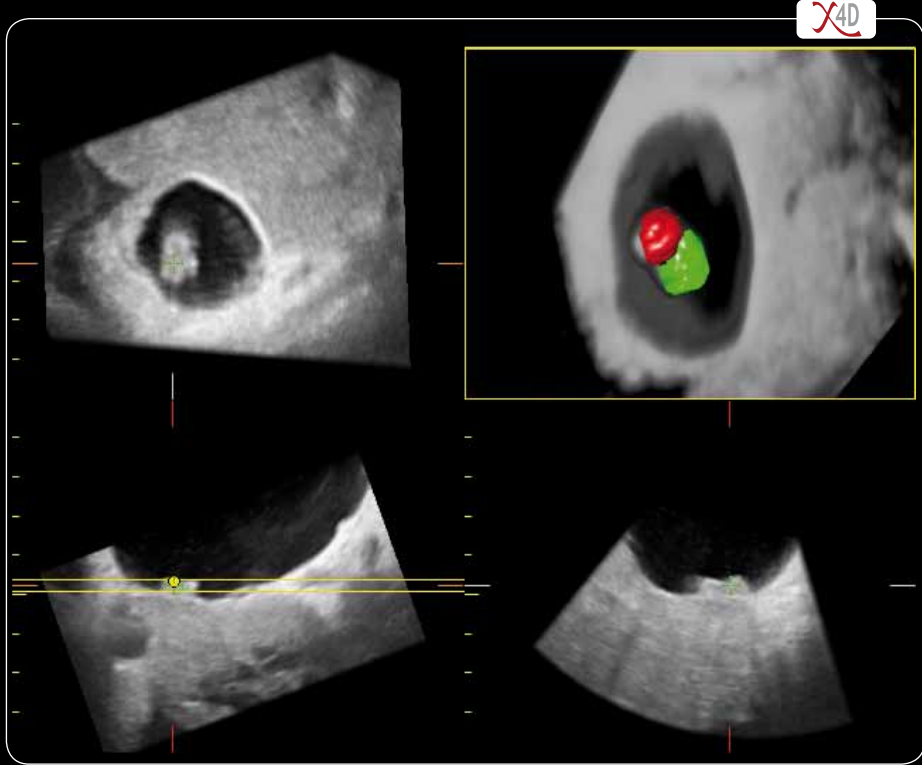
- ✓ Wide High Quality Image
- ✓ Diagnosis Oriented Workflow
- ✓ Full Touch Screen Intelligent Interface
- ✓ Easy Connectivity and Data sharing





iQProbes





Easy Networking

for integrated Patient Management



Wireless



When point-of-care scanning is required, integrated wireless connectivity is a necessity. With MyLab Sat, the acquired clinical information is easily

transferred to the review working station via wireless technology. The images can be stored in the archive for "one-touch" integration with the patient's clinical history.

Connectivity



In today's medical environment, the highest level of connectivity is required with integration the most important challenge for accurate Patient Management.

Easy networking allows data sharing and fast connection to existing and future hospital networks (DICOM and IHE compliance). At the same time, USB ports and integrated DVD burner represent smart solutions for data export, backup or filmless reporting.





MyLab™ Twice

16900720 (Mk Rev. A)



Esaote S.p.A.

International Activities: Via di Caciolle, 15 50127 Florence, Italy, Tel. +39 055 4229 1, Fax +39 055 4229 208, international.sales@esaote.com

www.esaote.com

<p>FRANCE Esaote France S.A.R.L. 22, rue Pierre Grange, 94124 Fontenay-sous-Bois Tel. +33 1 4871 2525, Fax +33 1 4871 3630 esaote.france@wanadoo.fr</p>	<p>GERMANY Esaote Biomedica Deutschland GmbH Max-Planck-Straße 27a, 50858 Köln Tel. +49 221 9268 00 00, Fax +49 2234 9679 628 info@esaote.de</p>	<p>SPAIN Esaote España S.A. Avenida San Sebastian, s/n 08960 Sant Just Desvern, Barcelona Tel. +34 93 473 2090, Fax +34 93 473 2042 info@esaote.es</p>	<p>THE NETHERLANDS AND BELGIUM Pie Medical Benelux B.V. P.O. Box 1132, 6201 BC Maastricht Tel. +31 43 3824650, Fax +31 43 3824651 benelux@pie.nl</p>	<p>UK Esaote Europe BV UK Branch Office, 400 Thames Valley Park Drive, Reading, Berkshire. RG6 1PT Tel. +44 118 965 3500, Fax +44 709 288 0231 ukinquiries@esaote.nl</p>	<p>USA Biosound Esaote Inc. 8000 Castleway Drive, P.O. Box 50858, Indianapolis, IN 46250 Tel. +1 317 813 6000, Fax +1 317 813 6600 info@biosound.com</p>
<p>BRASIL Brazilian Direct Office Rua Tomas Carvalho, 711, 04006-001 São Paulo SP Tel. +55 11 2589 0533 Fax +55 11 2589 0527 edson.lopes@esaote.com</p>	<p>ARGENTINA Esaote Latinoamérica S.A. San Martín 551, Cuerpo 'C', Piso 8, (C1004AAK) Buenos Aires Tel. +54 11 4326 1832, Fax: +54 11 4328 1245 info@esaote.com.ar</p>	<p>INDIA Esaote Asia Pacific Diagnostic Private Limited F-1, Level 1, Global Arcade, Near Global Business Park M.G. Road, Gurgaon (Haryana)-122002 Tel. +91 124 4775600, Fax +91 124 4775699 info@esaote.in</p>	<p>HONG KONG AND FAR EAST Esaote China Ltd 18/F, 135 Bonham Strand Trade Centre, 135 Bonham Strand, Sheung Wan, Hong Kong Tel. +852 2545 8386, Fax +852 2543 3068 esaote@esaotechina.com</p>	<p>CHINA Esaote Shenzhen Medical Equipment Room 2608, Tower B, Beijing Global Trade Center, 36 North Third Ring Road East, Dongcheng District, 100013, Beijing Tel. +86 010 58257766, Fax +86 010 52257760</p>	<p>RUSSIAN FEDERATION AND CIS Esaote S.p.A. 18 Leningradsky prospekt Off. 5 and 6, Moscow 125040 Tel. +7 495 232 0205, Fax +7 495 232 1833 esaotemoscw@yandex.ru</p>